

FEBRUARY 2012



Valentine's Day Luncheon

All Saints' cares deeply for Senior Adult Members and every year, with the exception of last year due to construction, a wonderful Valentine's Day Luncheon is planned. We all eagerly look forward to a wonderful meal, lively entertainment, clowns and so very much more.... Every Senior Adult is encouraged to attend this annual extravaganza! You'll laugh and be entertained while enjoying a special lunch.

Come join the fun in the Parish Hall on Valentine's Day, Tuesday, February 14, 2012 at 11:30 a.m.

Please R.S.V.P. by calling the Church receptionist at 688-4502 to let us know that you plan to attend.

See you on Valentine's Day!!

Senior Adult Ministries:

- Daughters of the King
- Lunch Bunch
- Foyers Dinners
- Red Hatters
- A Widow's Walk
- All Saints' Receptionists
- Offering Counters
- Kitchen Saints
- Thrift Store Volunteers
- Prayer Shawl Ministry
- Day Trips/Overnight Trips
- Senior Orphans
- Lay Eucharistic Ministers
- Senior Adult Shut-in Visitations
- Senior Saints
- Valentines Luncheon**
- Polk Senior Games**



Let's activate our minds and bodies by participating in the Polk Senior Games February 25 - March 12, 2012.

Fun and Friendly Competition for Men and Women Ages 50 and Over. Events are held throughout Polk County.

Speak, Lord, for we want to hear You. Grant us ears to hear, eyes to see, wills to obey, hearts to love. Then declare what thou wilt, reveal what thou wilt, command what thou wilt, demand what thou wilt.

Jim and Joy Proctor, Directors
All Saints' Senior Adult Ministries
863-683-4182
jproctor22@tampabay.rr.com

Pick up an entry booklet in the Church Lobby to learn more about the 40 different games; then complete the entry form and mail as instructed. Please write in the margin of the entry form that you are a member of All Saints' Episcopal Church. Entry postmark deadline: February 8.

Fr. Al and Fr. Reid asks that everyone come to the Opening Ceremony on February 25 to cheer our fellow members on — and be sure to plan to join in the Closing Ceremony on March 25 to congratulate all our participants and winners. Cheerleaders are welcomed!!

All Saints Ministry Leaders: Chris Sikes, BJ Brock
Coordinators and questions: contact Jim or Joy Proctor

February's walk down Memory Lane takes us to the lovely lady pictured here and we hope you'll recognize her right away. Hints? She's quiet; has a beautiful ready smile; she's self-contained and is a true friend to her friends. Think you know this pretty lady? — Call us at 683-4182.

Memory Lane



We began 2012 with a "Memory Lane" picture of **Marie Figari**. Minnie Fletcher immediately recognized Marie. Marie, a long time member of All Saints' attends monthly Saints' in Action meetings, and used to walk from her home at the Presbyterian Tower to attend All Saints' meetings.

God bless you, Marie.
We love you.

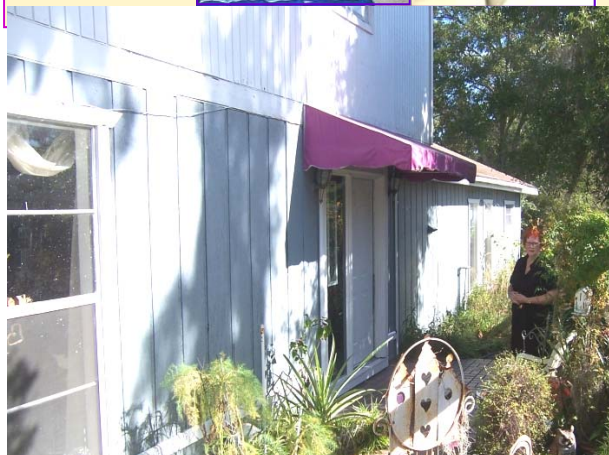


Join Ministry Leaders, **Beth Mason and Lynne Walker** monthly as they share their compassionate and loving ministry... "A Widow's Walk".

A Story of Love and Rescue

Late in 2011, the City of Lakeland had 'coded' Patti Rose because of the peeling paint on her home — unfortunately, professional house painting wasn't in her budget. So, by the grace of God and the love of a number of All Saints' 'Elves' who jumped in to help Patti, Habitat for Humanity was asked to purchase the paint and the "Elves" took the situation from there to completion. On December 16th, the peeling paint was scraped off and Patti's home was power-washed in preparation for painting. With the help of more "Elves" who came to help, Patti's home was completely painted — trim and all — in just three (3) days!!!

Patti loves All Saints' so very much and wants to express how extremely grateful and appreciative she is of the love shown her by the many All Saints' 'Elves'.



Dorothy Bunday

Dorothy Bunday, **mother** of our friend and loyal organist, **Martha Bunday**, went home to be with our Lord on Sunday, January 15, 2012.

We extend heartfelt prayers and condolences to Martha on the passing of her mother.